

BFGoodrich®

CROSS CONTROL® S

Get the traction, durability, and control you need for confidence in tough conditions with this long-wearing on/off road all position tire.



TERRAIN-GRIPPING TRACTION & HANDLING

Takes on snow, dirt and soft soil

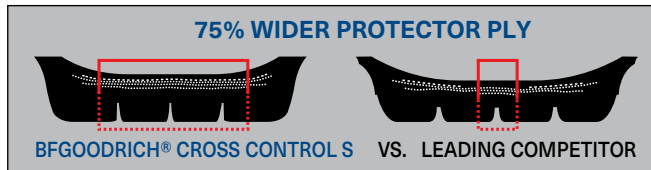
- Serrated shoulder conquers most any condition.
- Aggressive ribbed design grabs in tough conditions.



DOWNTIME-FIGHTING DURABILITY

Protects against road hazards

- Full-coverage protector ply 75% wider than a leading competitor ⁽¹⁾



- Special anti-cut, chip-resistant compounds
- 20% more mileage guaranteed than the BFGoodrich® ST565 Wide Base tire ⁽⁴⁾



RETREADABILITY COMES STANDARD

Gives you multiple lives

- Groove bottom protectors reduce stone drilling.
- Heat release technology keeps your casing running cool in tough conditions.



Standard Sizes

Application	Highway	Regional	Urban	Coach/Bus	On/Off-Road
Position	Steer	Drive	Trailer		
Standard Sizes					
Wide Base Sizes ⁽⁴⁾					

■ Recommended Application ■ Acceptable Application



GUARANTEED. OVER THE LONG HAUL.

If you're not completely satisfied with the BFGoodrich® CROSS CONTROL® tire's traction performance or the tire is taken out of service (not repairable or retreadable) in the first six months or before 50% of its usable tread life—whichever comes first—we will reimburse 50% of your acquisition price per tire.* Get 20% more mileage guaranteed on the BFGoodrich® CROSS CONTROL® S Wide Base tire than the BFGoodrich® ST565™ Wide Base tire.⁽⁶⁾

Size	Load Range	Catalog Number	Tread Depth 32nds	Max. Speed (2) mph	Loaded Radius		Overall Diameter		Overall Width (3)		Approved Wheels (Measuring wheel listed first)	Min. Dual Spacing (3)		Revs Per Mile	Max. Load Per Tire Single				Max. Load Per Tire Dual			
					in.	mm.	in.	mm.	in.	mm.		in.	mm.		lbs.	psi	kg.	kPa	lbs.	psi	kg.	kPa
11R22.5	H	03117	21	68	19.5	495	41.6	1056	11.2	284	8.25, 7.50	12.5	318	497	6940	123	3150	850	6395	123	2900	850
11R24.5	H	36251	21	68	20.4	520	43.6	1107	11.3	288	8.25, 7.50	12.5	318	475	7160	120	3250	830	6610	120	3000	830
315/80R22.5 ⁽⁵⁾	L	97643	21	68	19.8	502	42.5	1081	12.6	321	9.00	13.8	351	488	9090	130	4125	900	8270	130	3750	900
385/65R22.5 ⁽⁴⁾	J	53214	21	68	19.7	500	42.3	1075	14.9	377	11.75, 12.25	-	-	490	9370	123	4250	850	-	-	-	-
425/65R22.5 ⁽⁴⁾	L	19321	20	68	20.5	520	44.4	1128	16.5	420	13.00, 12.25	-	-	469	11400	120	5150	825	-	-	-	-

Note: Wheel listed first is the measuring wheel.

(1) Protector ply width compared to the Yokohama MY507 in size 11R24.5 LRH. Actual results may vary.

(2) Exceeding the lawful speed limit is neither recommended nor endorsed.

(3) Tire section widths and overall widths will change 0.1 inch (2.5 mm) for each 1/4 inch change in wheel width. Minimum dual spacing should be adjusted accordingly.

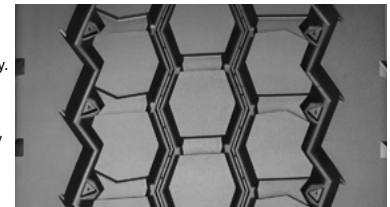
(4) BFGoodrich® Cross Control S Wide Base tires in sizes 385/65R22.5 LRJ and 425/65R22.5 LRL.

(5) Not approved for use with an 8.25 wheel.

(6) See BFGoodrichTruckTires.com > Reference Materials > Warranties/Guarantees for details.

BFGoodrich® tires are subject to a continuous development program. BFGoodrich® Commercial Truck Tires reserves the right to change product specifications at any time without notice or obligation.

MNA, Inc. continually updates its product information to reflect any changes in Industry Standards. Printed material may not reflect the current Load and Inflation information. Please visit www.bfgoodrichtrucktires.com for the latest product information. The actual load and inflation pressure used must not exceed the wheel manufacturer's maximum conditions. Never exceed a wheel manufacturer's limits without permission from the component manufacturer.



Wide Base Sizes⁽⁴⁾